



A Brand of
DRIVER
INDUSTRIAL

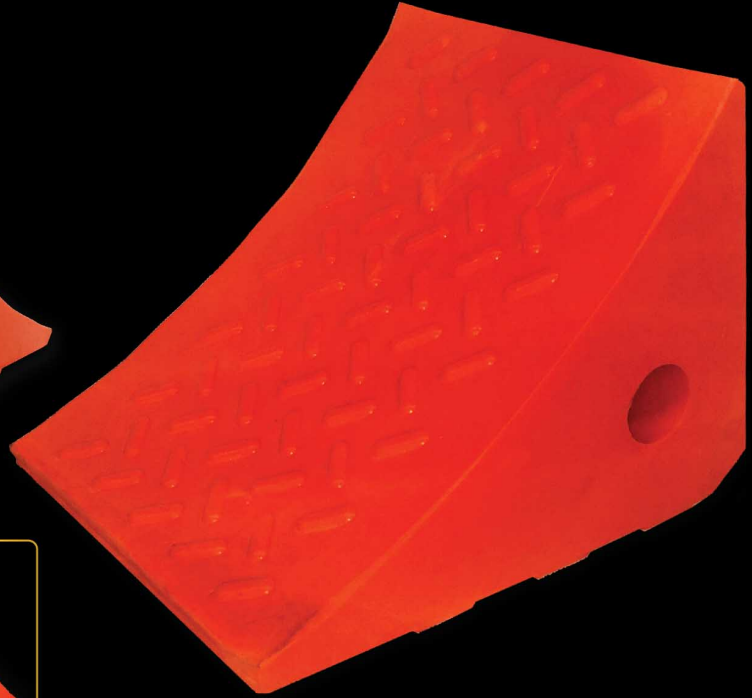
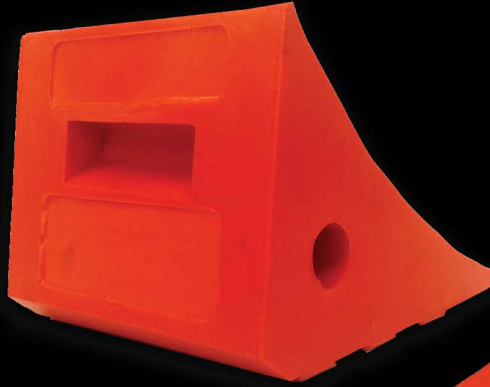


www.DriverIndustrial.com

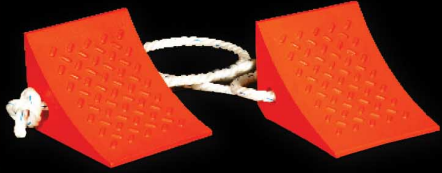
WC-UO300 Series

General Purpose

WC-UO300



WC-UO300-2R



Driver Industrial Products - Color shown are indicative only and may vary due to printing.

Testing & qualification is required for individual vehicle for correct product selection to meet site requirements.

Advised GVW is a guide only. This will vary due to environmental factors. Please complete an adequate risk assessment before using chocks. Do not use chocks if chocks are damaged.

WHEEL CHOCKS

Part #:	WC-UO300	WC-UO300-2R
Tire Size	35" (88.90cm)	35" (88.90cm)
Height	6.0" (15.24cm)	6.0" (15.24cm)
Width	7.0" (17.78cm)	7.0" (17.78cm)
Length	7.5" (19.05cm)	7.5" (19.05cm)
Weight	2.2 lbs (1.00kg)	5.5 lbs (2.49kg)
GVW <small>(Gross Vehicle Operating Weight)</small>	10 Ton* (20,000lbs)	10 Ton* (20,000lbs)

*Minimum of 2

HIGHLIGHTS:

- Light weight with tough urethane construction
- Rated for vehicles with gross operating weight up to 20,000lbs & tire sizes up to 35 in. Use (2) UO300 chocks.
- 3rd party tested for compliance
- Gross Vehicle Operating Weight (GVW) of 10 ton
- Complies with NFPA 1901 and NFPA 1906 Standards
- Resistant to oils, fuels and solvents
- Built-in carrying handle
- High visibility color used for safety
- Holes for rope, chains & mounting brackets

For More Information Call or Visit Us Online Today!

DS-UO300-RevA
Released: 10/14/2016

ADDRESS:

2115 W. Mountain View Rd.
Phoenix, AZ 85021 USA

2677 - 192 St. #107
Surrey, BC V3S 3X1 CA

USA

T: 602.424.2500

F: 602.424.9777

E: Sales@DriverIndustrial.com

CA

T: 604.560.5080

F: 604.560.5090

E: SalesCanada@SafetyWhips.com